

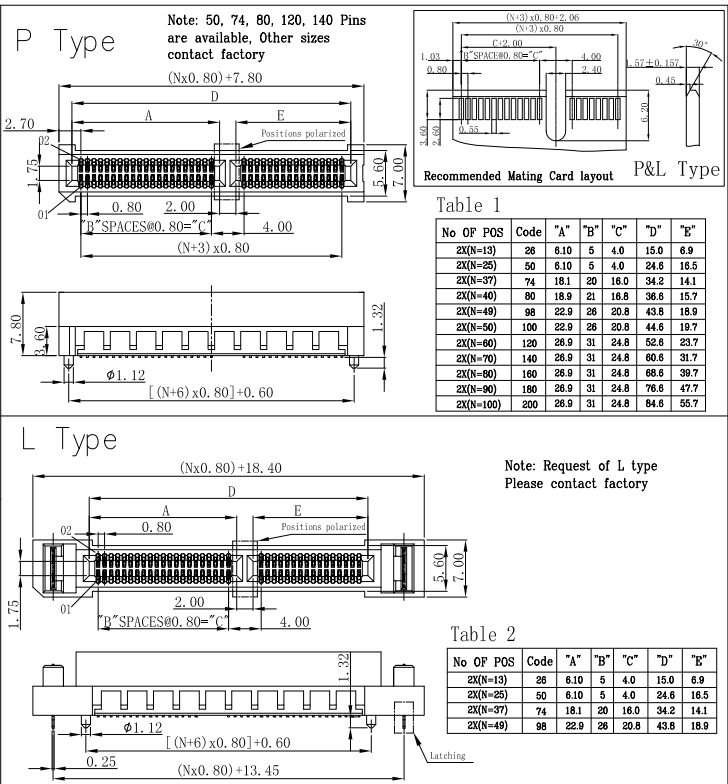
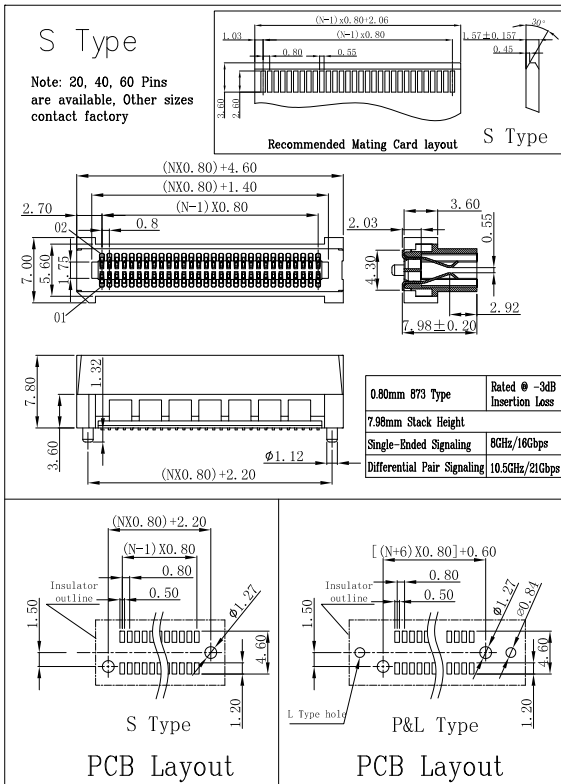
873

High Speed Mini-Edge Card Socket Pitch 0.80mm Straight SMT Type Profile 7.98mm

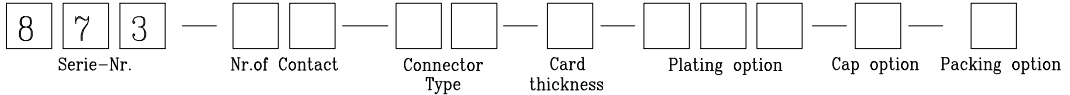
Technical Data :

- Insulator Material: High Temperature Thermoplastic, LCP, UL 94V-0
- Contact : stamped and formed, BeCu
- Plating: Au or Sn over Nickel
- Current Rating : 1.9 A @ 30°C Temperature Rise
- Contact resistance: 20 milliohms Max.
- Insulator resistance : 500 Megohms min.
- Dielectric withstanding : AC 500V for 1 Minute.
- Operating Temperature: -55°C to +125°C.
- Max. processing Temp: 230°C for 30-60 seconds. 260°C for 10 seconds.
- Mates with : 1.57mm Card

RoHS Compliant



How to order



Number of contact	Code
2X(N=10)	20
2X(N=20)	40
2X(N=30)	60
See Table 1 and Table 2	XX

Card thickness option	Code
1.57mm	1

Cap option	Code
W/Cap	1
W/O Cap	2

Connector Type	Code
Standard (S Type)	10
Positions polarized (P Type)	20
Positions polarized with Latching (L Type)	30

Plating option	Code
Gold plated	10
Selective gold flash plated	60
10U" Selective gold plated	610
30U" Selective gold plated	630

Packing option	Code
Tube	1
Tape & Reel	2

W.E.