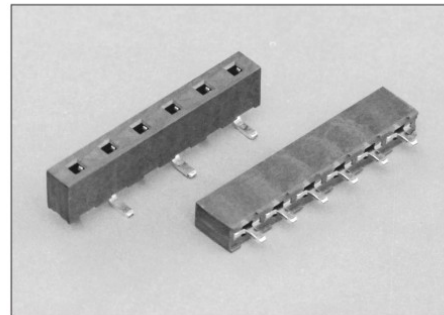


538D

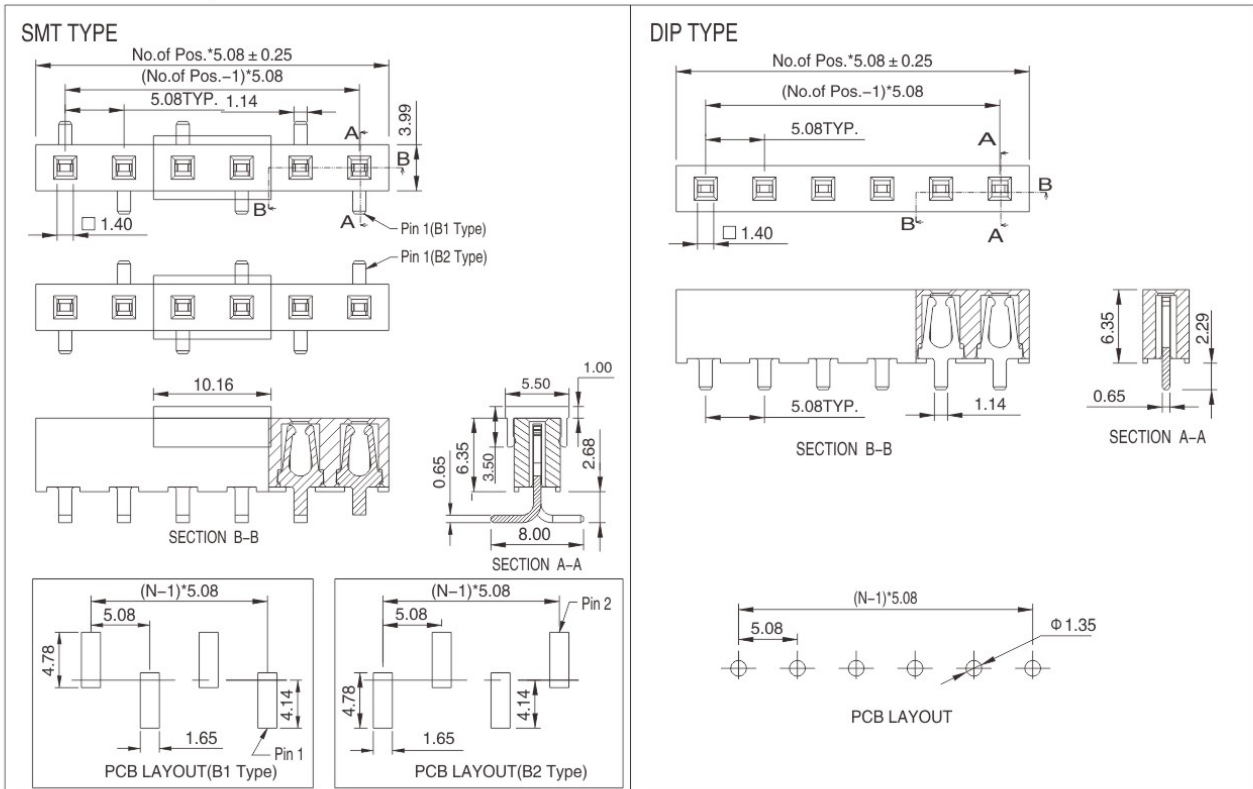
5.08PH Power Female Headers DIP/SMT Type

Technical Data:

Insulator Material:	High Temperature Thermoplastic, UL 94V-0
Contact:	stamped and formed, Phosphor Bronze/BeCu
Plating:	Au/Sn over Nickel
Current Rating:	6.8Amp 30° C Temperature Rise
Contact resistance:	10 milliohms Max.
Insulator resistance:	500 Megohms min.
Dielectric withstanding:	AC 500V mated with 538A
Operating Temperature:	-40° C to +105° C.
Max. processing Temp:	230° C for 30-60 seconds. 260° C for 10 seconds.
Mates with:	538A



RoHS Compliant



How to order



Nr. of Contact	Code
Single Row 2 to 20 poles	02-20

Connector type	Code
DIP Type	10
SMT B1 Type	21
SMT B2 Type	22

Contact Material	Code
Phosphor Bronze	2
BeCu	3

Packing Option	Code
Tube	1
Tape & Reel	2

Plating option	Code
Full Gold Flash plated	10
Tin plated	50
Selective gold flash plated	60
10u" Selective gold plated	610
15u" Selective gold plated	615

Pick & Place Pad	Code
W/ Cap	1
W/O Cap	2

W.E.